

# THE GLOVER'S LEDGER

A Monthly Newsletter

welcome! // Kolipaid!

Wlimôgwzo na awan! // The air smells good. The smell of the change of the season, the oncoming crispness of fall. We are gearing up for another wonderful semester at Glover's Ledge and send well wishes from our neck of the woods, to yours!  
 Take care // Wlinanawalmezi

Glover's Ledge was established on N'dakinna, the unceded ancestral homelands of the Western Abenaki peoples past and present. We acknowledge and honor with gratitude the land (ki), the water (nebi) and the alnôbak (people) who have stewarded N'dakinna through generations.

Wlimôgwzo: oo-lee-MOH-gwzo (nasal "o") || na: nah || awan: ah-wahn

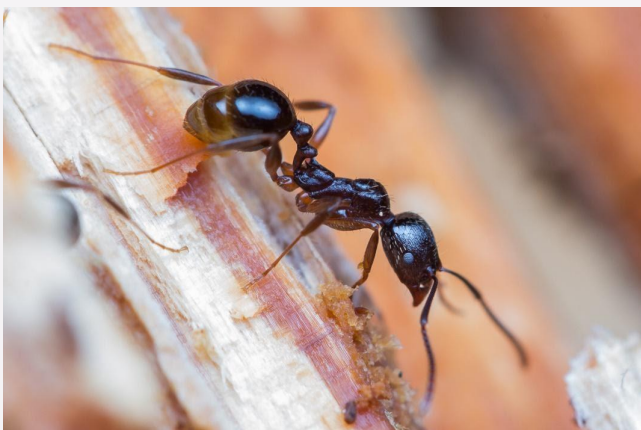
My thanks and gratitude to Jesse Bruchac for his teaching of the Abenaki language. See [westernabenaki.com](http://westernabenaki.com) for more.

## ANTS AT GLOVER'S LEDGE

by Kyle Bradford

Did you know there are more than 140 species of ants in New England? Most people are familiar with the ones that become unwanted house guests, like carpenter ants, but as a group, the ants have an intriguing diversity of natural history. We have tiny thief ants, acorn dwellers, seed dispersers, kidnappers, and vampire ants, just to name a few.

Fueled by wild blackberries (still some out there!), I spent a few hours searching for and photographing ant nests around Glover's Ledge. A good place to look for nests is in and under rotting wood, like downed logs and stumps. The soil under rocks is also prime ant real estate. In the forests at Glover's Ledge, *Aphaenogaster picea* is common. These ants are important seed dispersers of some woodland ephemeral flowers, whose seeds have evolved tasty seed covers called elaiosomes. The ants forage the seeds and remove the covering, and in doing so, move the seed away from the parent plant.



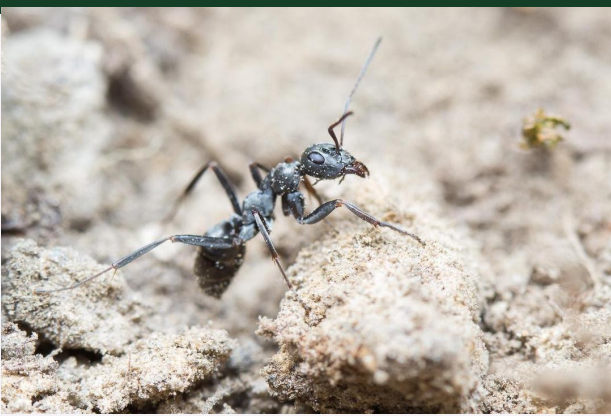
*Aphaenogaster picea* in a rotting stump.



A colony of a common acorn nesting ant *Temnothorax longispinosus*. The photo is from Chesterfield, NH. Although I did not find any acorn nests during my visit to Glover's Ledge, these ants are likely present there.

My favorite find of the day was seeing two nests of the kidnapping species *Formica subintegra*. Kidnapping ants are parasitic on one or many species of closely related ants. The kidnappers raid host species' nests to steal the developing young (pupae and larvae), which then develop and work for the kidnappers' colony. If you see a mixed nest with two distinct species living together, you have likely found a kidnapping colony. *Formica subintegra* is an obligate kidnapping ant, meaning they depend on the free labor from their stolen workers to do most functions around the nest, including foraging for food. If the kidnappers do not replenish their workforce with stolen larvae and pupae, they will perish.

The lives of ants are full of interesting stories. Their abundance and social nature make them relatively easy to find and fun to observe. Next time you are roaming your local woods and fields, take a look at the ground or under a log, and have a look at these fascinating animals. Maybe you will see a trail of ants carrying seeds or a raiding party of kidnappers. *Photos cont. p.2*



Formica subsericea is common in our area in both fields and open-canopy forests. They are parasitized by several other ant species, including the kidnapper.



Formica subintegra. The kidnapping ant Formica subintegra (red ant) with its kidnapped host Formica subsericea (black ant).



### - BIRD OF THE MONTH -

## BROAD-WINGED HAWK

by Steven Lamonde, photo by David Brown

A medium-sized buteo, this forest-dwelling hawk migrates to and from northern South America each year. Some soaring groups of hawks, or kettles, can number in the hundreds, or even thousands.

>Calls

## REFLECTIONS~

A SPACE FOR STUDENT THOUGHT, ART, POETRY, COMMENTARY...

email [slobdell@antioch.edu](mailto:slobdell@antioch.edu) to submit!

WELCOME WELCOME WELCOME!!! WELCOME NEW STUDENTS AND SEASONED ANTIOCH SOULS ALIKE! SINCE ORIENTATION WAS VIRTUAL THIS YEAR INSTEAD OF IN-PERSON AT GLOVER'S LEDGE, A FEW HELPFUL MAPS ARE ATTACHED TO HELP YOU GET TO AND EXPLORE THE LEDGE ON YOUR OWN. THE LANDSCAPE IS OPEN TO THE PUBLIC, AND STUDENT PROJECTS ARE ENCOURAGED. THERE ARE ALSO TWO PAID POSITIONS OPENING UP; ONE TO BUILD SEVERAL NEW TRAILS AND ONE TO CREATE AND INSTALL INTERPRETIVE SIGNAGE. CONTACT PETER PALMIOTTO (PPALMIOTTO@ANTIOCH.EDU) FOR DETAILS!

AS YOU COME HERE TO LIVE OR FIND YOUR NEXT MISSION I LEAVE YOU WITH SOME [WORDS OF ENCOURAGEMENT](#) FROM DR. JOHN FRANCIS/PLANETWALKER. DR. FRANCIS IS AN INCREDIBLE INDIVIDUAL WHO LIVED HIS MISSION TO RAISE ENVIRONMENTAL AWARENESS BY WALKING ACROSS THE WORLD FOR 22 YEARS WITHOUT THE HELP OF FOSSIL FUEL POWERED VEHICLES, AND IN A VOW OF SILENCE FOR 17 YEARS SO THAT HE COULD FULLY LISTEN TO THOSE HE MET ALONG THE WAY.



"A LOT OF TIMES WE FIND OURSELVES IN THIS WONDERFUL PLACE WE'VE GOTTEN TO, BUT THERE'S ANOTHER PLACE FOR US TO GO. AND WE KIND OF HAVE TO LEAVE BEHIND THE SECURITY OF WHO WE'VE BECOME AND GO TO THE PLACE OF WHO WE ARE BECOMING. AND SO I WANT TO ENCOURAGE YOU TO GO TO THAT NEXT PLACE, TO LET YOURSELF OUT OF ANY PRISON THAT YOU MIGHT FIND YOURSELF IN AS COMFORTABLE AS IT MAY BE BECAUSE WE HAVE TO DO SOMETHING NOW." -DR. FRANCIS

JUST RELEASED  
on Weebly  
**Technical Bulletin 08**

ALL ABOUT THE MOTUS TOWER,  
WHAT IT'S TRACKING, AND THE  
MOTUS TOWER NETWORK.

**Thank You for Visiting!!**

### - CALL FOR SUBMISSIONS -

Glover's Ledge is installing a brand new Free Library, and we want YOUR help to fill it! What narratives of the outdoors speak to you? Field guides? Children's books? Etc! Send your suggestions to [slobdell@antioch.edu](mailto:slobdell@antioch.edu)



TO SUBMIT, CONTACT GLOVER'S LEDGE ENVIRONMENTAL EDUCATION/OUTREACH COORDINATOR:  
SARA LOBDELL (SLOBDELL@ANTIOCH.EDU)

[facebook.com/gloversledge](https://www.facebook.com/gloversledge) || [gloversledge.weebly.com](https://gloversledge.weebly.com)



# How to get to Glover's Ledge:

212 Cheshire Turnpike, Langdon, NH 03602.  
43°08'49.2"N, 72°23'45.5"W

From Keene, there are several options:

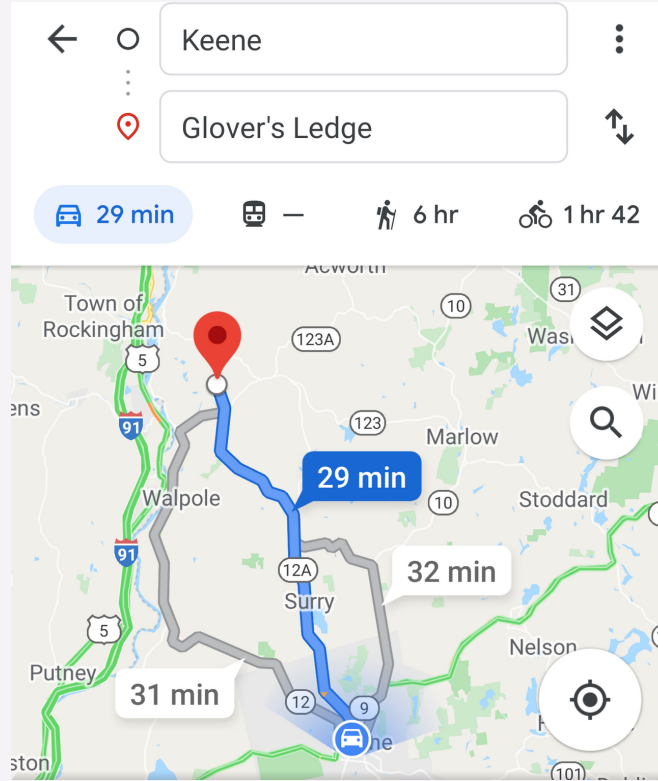
## 29 Min Option:

- Start by heading North out of Keene up Court St.
- Turn Right onto Rte 12A at the traffic circle
- Turn Left onto Walpole Valley Rd, which turns into Valley Rd
- Turn Right onto Old Cheshire Turnpike
- Once in Drewsville, turn Right at the General Store to Whitcomb Rd/Rte 123.
- Continue straight onto Cheshire Turnpike.
- Glover's Ledge will be one mile ahead on your Right. You will know you have arrived when you see the wooden sign for Glover's Ledge at the driveway, a large white barn and landscape surrounded by a white fence. Hubbard Farms, a chicken farm, across the street. If you reach Great Brook Forest Products, or the Langdon Covered Bridge, you've gone too far. You may park in the open space next to the building.

## 31 Min Option:

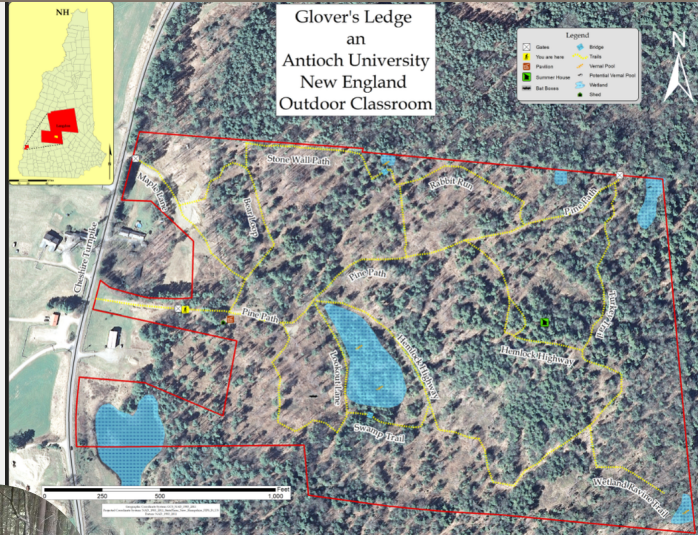
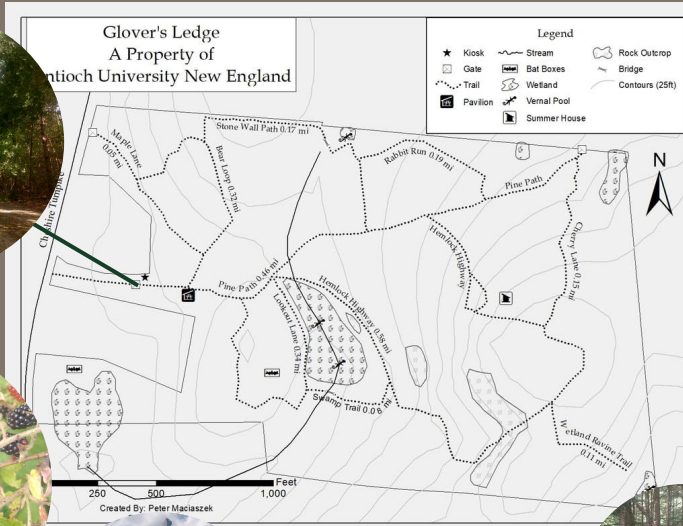
- Start by heading North on Route 12 out of Keene towards Walpole.
- Turn right onto Upper Walpole Road. You will see a sign for Hubbard Park at this turn.
- Turn right on Route 123 S.
- Continue past the Drewsville General Store (Route 123 takes a slight bend left after the store) until you reach a flashing yellow light.
- Continue straight onto Cheshire Turnpike.
- One mile ahead, on the right, is Glover's Ledge. You will know you have arrived when you see the wooden sign for Glover's Ledge at the driveway, a large white barn and landscape surrounded by a white fence. Hubbard Farms, a chicken farm, across the street. If you reach Great Brook Forest Products, or the Langdon Covered Bridge, you've gone too far. You may park in the open space next to the building.

**\*Google Maps Warning\*:** 2 locations will come up when you search Glover's Ledge; one with an apostrophe, one without. The location WITH the apostrophe, off of Cheshire Turnpike, is correct.



# At Glover's Ledge: Explore the trails!

What habitats can you find along the way?



Check out the "Glover's Ledge" iNaturalist project, and please submit your own observations!