

THE GLOVER'S LEDGER

A Monthly Newsletter

welcome! // Kolipaid!

Happy New Year! Welcome back to another semester; we hope you were able to enjoy the break! The deep wazôli // snow of last semester gave way to abundant rain, and then another round of snow while we were gone. A few patches of snow remain, and wherever you are it's a nice time to adalosa // walk and kina // look - see whose tracks you can find! Have a wonderful semester everyone, all the best from our neck of the woods, to yours.
Take care // wlinanawalmezi

Glover's Ledge was established on N'dakinna, the unceded homelands of the Western Abenaki peoples. We acknowledge and honor with gratitude the land (ki), the water (nebi) and the alnôbak (people) who have stewarded N'dakinna through generations and continue to do so today.

wazôli: WA-zô-li (ô = long A, like awe) | adalosa: ad-AI-o-sa | kina: ki-NA

My thanks and gratitude to Jesse Bruchac for his teaching of the Abenaki language. See westernabenaki.com for more.

'TIS THE SEASON: ANIMAL TRACKING 101

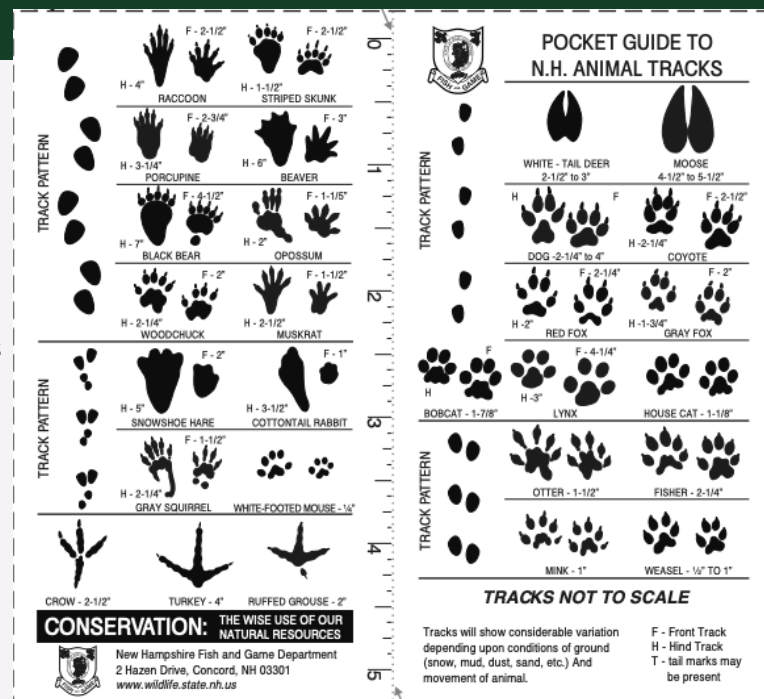
By: Sara Lobdell

Puzzles are a wintertime favorite for many. I also love me a good winter puzzle, but rather than pieces of cardboard my favorites involve the prints, fur, scat, and smells we are able to see this time of year in the snow and mud that's absent in other seasons. These are the 3 steps I use while tracking, if you'd like to follow and try tracking for yourself! I've also included a couple of resources to learn more - I am by no means an expert, but narrowing down to these 3 steps has helped me simplify the process. Happy tracking!

1. Know who goes: What critters live in the area? Check out iNaturalist to see who has been seen in the area recently, and reference any guidebooks, local nature centers, and/or local experts you can find. Knowing the limits of who could be around (ie: we won't find an alligator in the forests of New Hampshire) helps narrow the possibilities.

2. Zoom in on the print: A single footprint can tell a whole story and help narrow down the possibilities further. How many toes do you see? Do you see nails/claws? Are the toes mammal-like, bird-like, etc?

3. Zoom out on the pattern: Sometimes a single footprint isn't enough, and zooming out helps finalize the story. Are the tracks close together/far apart? Does the animal appear to be walking, bounding, hopping, running, etc? Is there anything else you notice - a tail drag, scat, smells, fur, bones? Take account of all the information you can gather to finalize the story.



Cut out this NH Fish and Game pocket guide to NH Animal Tracks for a handy reference on the go!

For more info:

- Brief tracking overview [here](#).
- *Tracking and the Art of Seeing*, by Paul Rezendes (a recommendation from last year's tracking hike leader and AUNE Mammology Professor Kyle Rodd!)
- Take a class - [The Vermont Wilderness School](#) offers tracking courses.

UPCOMING EVENTS

@ Glover's Ledge and nearby



- BIRD OF THE MONTH -

HOODED MERGANSER

by Ally Gelinas, photo Ian Hearn (eBird)

"Hooded" is something of an understatement for this extravagantly crested small duck. Adult males are black above, with a white breast, rich chestnut flanks, and white crest patch. Females and immatures are gray and brown, with warm tawny-cinnamon tones on the head. Ducklings leave their nest cavity within 24 hours of hatching. From inside the nest, the little fluffballs scramble up to the entrance hole and then flutter to the ground, which may be 50 feet or more below them! Hooded Merganser's are silent except in courtship. >[Sounds](#)

FOOD FOR THOUGHT:

WHITE PINE TEA by: Sara Lobdell

White Pine / koa / *Pinus strobus* is an overstory pine with long, thin needles in bundles of 3-5 (most often 5). At Glover's Ledge, the only other pine is Red Pine, but these have thick needles in bundles of 2 (see Dec's Ledger for ID details).

White Pine tea is one of my favorite warm beverages of winter. To make, simply gather several bundles of needles and steep in boiling water. The more bundles, the piney-er the tea.

Not only does it warm the soul and smell like the season, pine tea is also [very high in vitamin C](#) giving a much needed immune boost during the most cold-prevalent time of year.

Take care while gathering. See Dr. Kimmerer's [The Honorable Harvest](#) for keys to sustainable gathering and gratitude for the plants who help us through this difficult season.



TBD 2021 *YOUR EVENT HERE*

WHAT EVENTS WOULD YOU LIKE TO SEE IN SPRING 2021 AT GLOVER'S LEDGE? LET US KNOW [HERE!](#)

JAN 19, 2021: 5:30-6:30PM - WEATHERIZING WINTER

JOIN HARRIS CENTER NATURALISTS TO LEARN HOW ANIMALS, PLANTS, AND MICROBES HAVE ADAPTED TO SURVIVE WINTER - REGISTER [HERE](#)

JAN 21: 5:30-6:30PM - THE NEW ENGLAND COTTONTAIL

JOIN UNH WILDLIFE BIOLOGIST DR. ADRIENNE KOVACH TO LEARN ABOUT HER WORK ON THE REINTRODUCTION OF THE NOW-RARE NEW ENGLAND COTTONTAIL - REGISTER [HERE](#).

JAN 29: 6-8:00PM - ALAMIKOS STORYTELLING EVENING

AN EVENING OF NATIVE AMERICAN TALES OF THE NORTHEASTERN WOODLANDS, HOSTED BY JESSE, JAMES, AND JOE BRUCHAC. - REGISTER [HERE](#).

FEB 6: 11-12:00PM - WOOLY MAMMOTHS!

A MORNING ABOUT NEW HAMPSHIRE'S LONG-GONE ELEPHANT RELATIVES WITH HARRIS CENTER NATURALIST SUSIE SPIKOL. - REGISTER [HERE](#).

FRIDAYS IN FEB, 10-11:00AM - FUNGI DIVERSITY IN NH

JOIN HARRIS CENTER NATURALISTS FOR A 3-PART ONLINE FUNGI COURSE! - REGISTER [HERE](#).

HOW TO BE A STARGAZER

Glover's Ledge is beautiful during the day, but amazing views of the stars also abound on clear nights! Check out the latest from our friends at the Harris Center [here](#) to brush up on your stargazing skills before your next visit.

Thanks for Visiting!!

WE WANT TO HEAR FROM YOU! HAVE AN IDEA FOR AN ARTICLE? WANT TO LEAD A HIKE?

CONTACT: [SARA LOBDELL \(SLOBDELL@ANTIOCH.EDU\)](mailto:SARA.LOBDELL@ANTIOCH.EDU)

GLOVER'S LEDGE ENVIRONMENTAL EDUCATION/OUTREACH COORDINATOR

FOR DIRECTIONS TO GLOVER'S LEDGE, VISIT: GLOVERSLEDGE.WEBLY.COM/DIRECTIONS

facebook.com/gloversledge
gloversledge.weebly.com

How to get to Glover's Ledge:

212 Cheshire Turnpike, Langdon, NH 03602.
43°08'49.2"N, 72°23'45.5"W

***Google Maps Warning*:** 2 locations will come up when you search Glover's Ledge; one with an apostrophe, one without. The location WITH the apostrophe, off of Cheshire Turnpike, is correct.

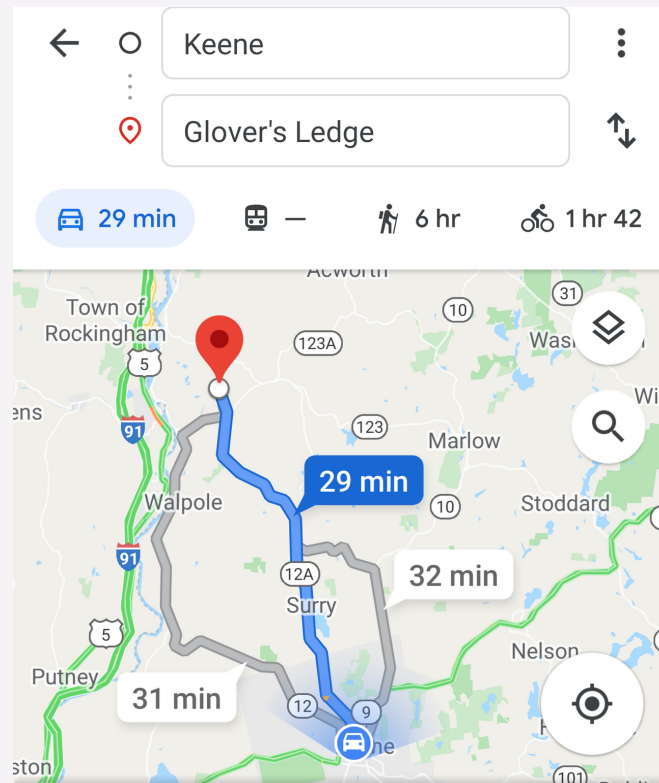
From Keene, there are several options:

29 Min Option:

- Start by heading North out of Keene up Court St.
- Turn Right onto Rte 12A at the traffic circle
- Turn Left onto Walpole Valley Rd, which turns into Valley Rd
- Turn Right onto Old Cheshire Turnpike
- Once in Drewsville, turn Right at the General Store to Whitcomb Rd/Rte 123.
- Continue straight onto Cheshire Turnpike.
- Glover's Ledge will be one mile ahead on your Right. You will know you have arrived when you see the wooden sign for Glover's Ledge at the driveway, a large white barn and landscape surrounded by a white fence. Hubbard Farms, a chicken farm, across the street. If you reach Great Brook Forest Products, or the Langdon Covered Bridge, you've gone too far. You may park in the open space next to the building.

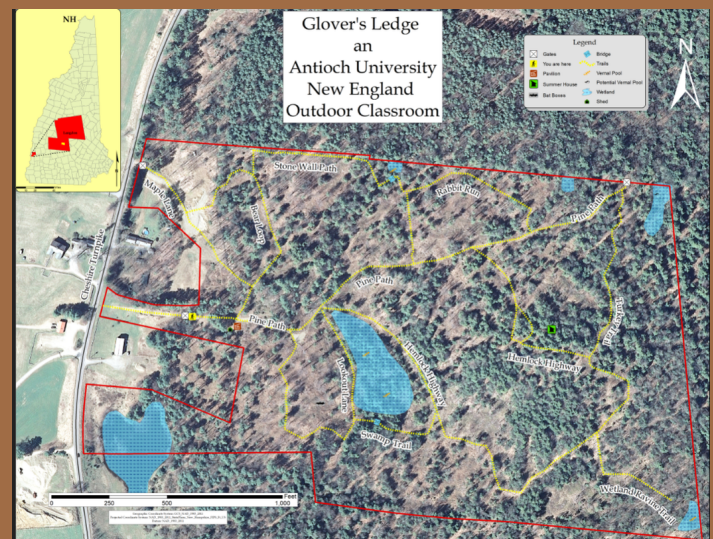
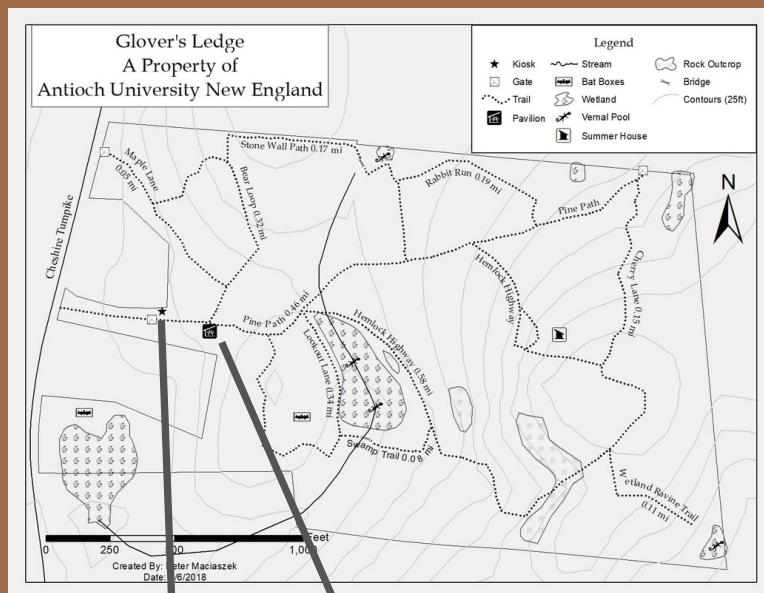
31 Min Option:

- Start by heading North on Route 12 out of Keene towards Walpole.
- Turn right onto Upper Walpole Road. You will see a sign for Hubbard Park at this turn.
- Turn right on Route 123 S.
- Continue past the Drewsville General Store (Route 123 takes a slight bend left after the store) until you reach a flashing yellow light.
- Continue straight onto Cheshire Turnpike.
- One mile ahead, on the right, is Glover's Ledge. You will know you have arrived when you see the wooden sign for Glover's Ledge at the driveway, a large white barn and landscape surrounded by a white fence. Hubbard Farms, a chicken farm, across the street. If you reach Great Brook Forest Products, or the Langdon Covered Bridge, you've gone too far. You may park in the open space next to the building.



At Glover's Ledge: Explore the trails!

What habitats can you find along the way?



Help us track the biodiversity at Glover's Ledge! Submit your observations to the "Glover's Ledge" project on iNaturalist, and the "Glover's Ledge (Antioch New England), Langdon, NH" location on eBird.

