



THE GLOVER'S LEDGER

A Monthly Newsletter

welcome! // Kolipaid!

N'nodawôak sibsak ta chegwalak lintowawihidit - lintowôganal wji sigwan! I hear the birds and frogs that sing - the songs of spring! We hope you are soaking up the sun (and the rain) these days, and hope to see you on a visit to Glover's Ledge soon. As always, all the best wishes from our neck of the woods, to yours. Take care // wlinanawalmezi

Glover's Ledge was established on N'dakinna, the unceded homelands of the Abenaki Peoples. We acknowledge and honor with gratitude the land (ki), the water (nebi) and the alnôbak (people) who have stewarded N'dakinna through generations and continue to do so today.

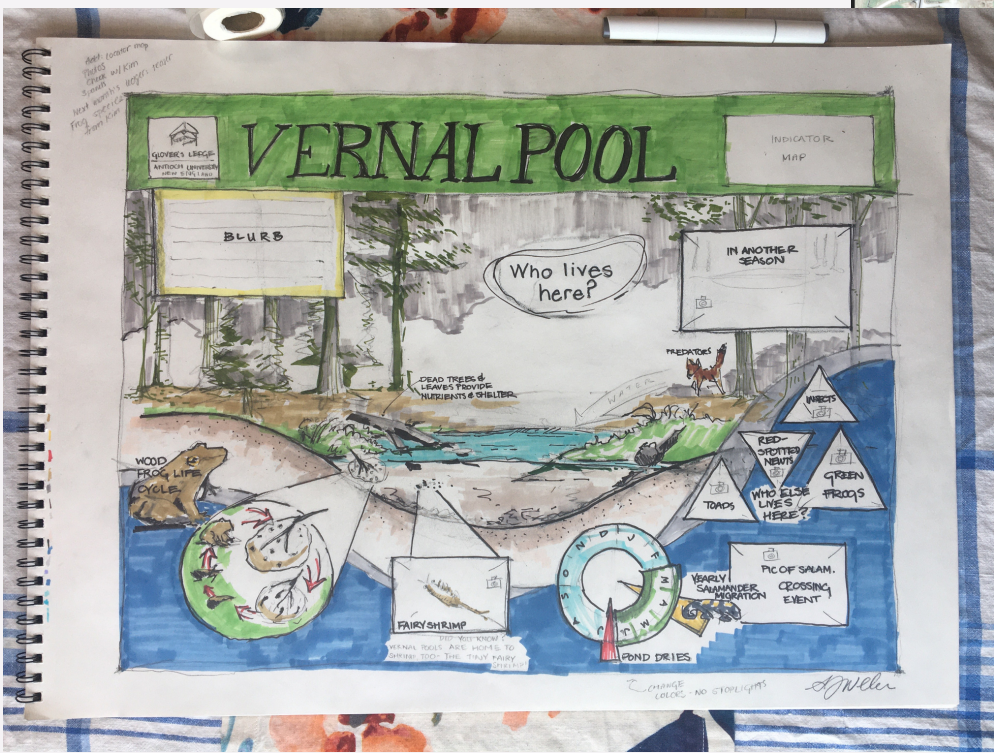
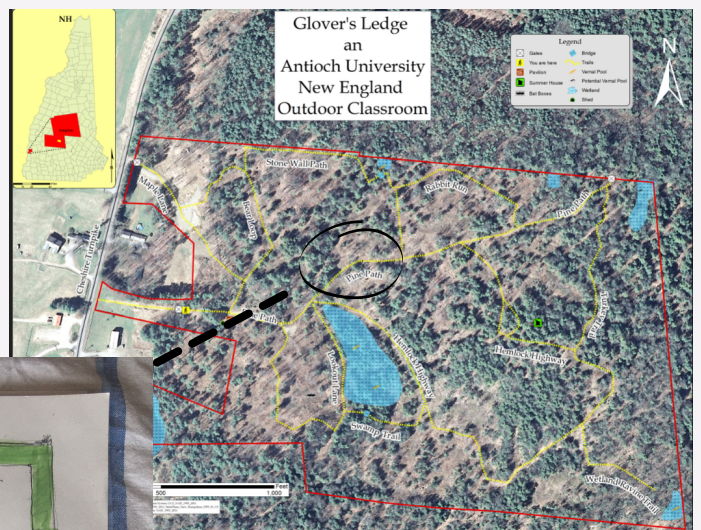
sibsak: seesb-SAK
chegwalak: TSEG-wal-AK
lintowôgan: lin-TOE-wawn-GAN
sigwan: see-GWAN

My thanks and gratitude to Jesse Bruchac for his teaching Alnôbaôdwa - the Abenaki language. For more, visit westernabenaki.com

INTERPRETIVE SIGNAGE: SNEAK PEAK

Article: Sara Lobdell
Signage: Sarah Welch

Behold! The first draft of the Vernal Pool sign by Sarah Welch, one of a number of interpretive signs to be installed along a soon-to-be barrier free, fully accessible trail. The project to design and install a barrier free trail along Pine Path (circled right) with interpretive signage has been an ongoing, behind the scenes project, with the help of several students who have completed sections and passed their work to a new student.



Sarah Welch, MSES Environmental Education, has been designing, drafting, and developing the signage based on the beginnings of the project by Erin Glocke. Erin Glocke, MSES Environmental Education Alum, completed a portion of the signage ideas and descriptions last year. Jack Minich, Glover's Ledge Property Manager, is currently handling the barrier free trail side of things, including grant writing and construction.



- BIRD OF THE MONTH - RING-NECKED DUCK

by Ally Gelinis, photo Darlene Friedman (eBird)

The Ring-Necked Duck/Kwigwigem/Aythya collaris is a compact diving duck, often seen in pairs, small flocks, or large flocks during fall migration. Don't look for a ring around the neck—it's really hard to see. Look instead for the male bird's peaked head shape, white ring around the bill, and white patch just in front of the gray flanks. Females are rich brown with a contrastingly pale cheek, a white patch near the bill, and a whitish eye ring. >[Sounds](#)

MUD SEASON TRACKING

A big thanks to MSES Conservation Biology student Andrea Grossman for leading us on our most recent hike - mud season tracking! We saw deer and canine tracks, and lots of scat :). For those of you who missed it but want to try tracking at home, we referenced the [Mammal Tracks & Sign - A guide to North American Species](#).



- BIOBLITZ RESULTS -

Thanks to everyone who came out, at Glover's Ledge or your own neck of the woods, to our annual Spring Bioblitz! Overall, our observers made a whopping 245 observations covering 179 species!! Last year our top observations were of plants, but this year birds topped the charts. The Song Sparrow and the American Robin were our most observed species. See the detailed results [here](#), and stay tuned for details about next year's Bioblitz.



A few highlights! One of the first dandelions of the year, a sure sign of spring, and LOTS of snakes out and about.



Thanks for Visiting!!

WE WANT TO HEAR FROM YOU! HAVE AN IDEA FOR AN ARTICLE? WANT TO LEAD A HIKE?

CONTACT: [SARA LOBDELL \(SLOBDELL@ANTIOCH.EDU\)](mailto:SARA.LOBDPELL@ANTIOCH.EDU)

GLOVER'S LEDGE ENVIRONMENTAL EDUCATION/OUTREACH COORDINATOR

FOR DIRECTIONS TO GLOVER'S LEDGE, VISIT: GLOVERSLEDGE.WEBBLY.COM/DIRECTIONS

facebook.com/gloversledge
gloversledge.weebly.com
[@gloversledgeaune](https://twitter.com/gloversledgeaune)